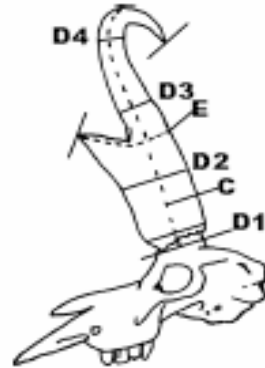
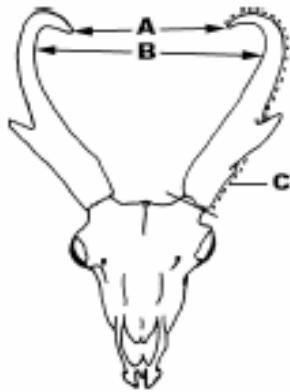


BOWHUNTING IN ARIZONA

Record Book Committee, Inc.

Pronghorn Antelope

MINIMUM SCORE 60



SEE OTHER SIDE FOR INSTRUCTIONS		COLUMN 1	COLUMN 2	COLUMN 3
A. Tip to Tip Spread		Right Horn	Left Horn	Difference
B. Inside Spread				
C. Length of Horn				
D-1 Circumference of Base				
D-2 Circumference at First Quarter	(This measurement taken at _____ inches from base)			
D-3 Circumference at Second Quarter	(This measurement taken at _____ inches from base)			
D-4 Circumference at Third Quarter	(This measurement taken at _____ inches from base)			
E. Length of Prong				
TOTALS				

ADD	Column 1		Location of Kill:	Unit No.	Arizona
	Column 2		Date Killed:	Hunter:	
Subtotal			Hunter's Address:		
Subtract Column 3			City:	State:	Zip Code Telephone # ()
FINAL SCORE			Guide's Name and Address:		
			Remarks: (Mention Any Abnormalities or Unique Qualities)		

At the time of official measurement, were the sheaths reattached to the cores by the use of some type of filler or adhesive? YES NO

(If "yes," the D-1 value can not exceed the D-2 value on the same horn. If so, enter the actual D-1 measurement in the remarks section and record the D-2 measurement as the D-1 value in its respective column.)

I, _____, certify that I have measured this trophy on _____
PRINT NAME MM/DD/YYYY

at _____
STREET ADDRESS CITY STATE ZIP CODE

and that these measurements and data are, to the best on my knowledge and belief, made in accordance with the instructions given.

Witness: _____ Signature: _____
TO MEASURER'S SIGNATURE BIA OFFICIAL MEASURER

 ADDRESS

CITY STATE ZIP

BRIEF INSTRUCTIONS FOR MEASURING PRONGHORN ANTELOPE

Measurements must be made with a 1/4" flexible steel tape and recorded to the nearest one-eighth of an inch. To simplify addition, please enter fractional figures in eighths and in proper fractions.

A. Tip to Tip Spread measured between tip of horns.

B. Inside Spread of Horns measured at right angles to the center line of the skull at widest point between horns.

C. Length of Horn is measured on the outside curve, as illustrated. The line taken will vary with different heads, depending on the direction of the curvature. Measure along the center of the outer curve, from tip of horn, to a point in line with the lowest edge of the base, using a straight edge to establish the line end.

D-1 Circumference of Base is measured at right angles to long axis of the horns. Do not follow irregular edge of horn. The line of measurement must be entirely on horn material.

D-2-3-4 Circumferences. Divide measurement of longer horn by four. **Measuring from the base**, mark **BOTH** horns at these quarters even though one horn is shorter, and measure circumferences at these marks. Should D-2 land on the swelling of the prong, take D-2 measurement **immediately below** swelling of prong. Note D-3 **must** be taken above the prong. If D-3 falls on or below the prong, then take this measurement **immediately above** the prong. If adjustments for swelling of prong are made to the D-2 or D-3 measurement, note these adjustments in "REMARKS" section.

E. Length of Prong. Measure from the tip of the prong, **along the upper edge** of the outer side to the horn: then, around the horn, to a point at the rear of the horn where a straight edge across the back of both horns touches the horn. This measurement around the horn, from the base of the prong, should be taken at right angles to the long axis of the horn.

Drying Period: To be eligible for entry in the Bowhunting in Arizona Records, a trophy must first have been stored under normal room temperature and humidity for at least 60 days after date of kill. No trophy will be considered which has been altered in any way from its natural state.

ENTRY REQUIREMENTS

- 1) Fully completed Score Sheet from Bowhunting In Arizona, Pope & Young or Boone & Crockett. Must be signed by the hunter, a witness and the Official Measurer.
- 2) Fully completed application form. Must be signed by the hunter and a witness.
- 3) Fully completed Fair Chase Affidavit. Must be signed by the hunter and a witness.
- 4) Three (3) photographs of the antlers, horns or skull.
- 5) One (1) photograph of the entire animal in the field, with the hunter, if available.
- 6) A \$20 application processing fee which can be paid by check or money order. Payable to: Bowhunting in Arizona
- 7) * Mail the entire packet; completed Score Sheet, Application form, Fair Chase Affidavit, four photographs and the entry fee to:

Bowhunting in Arizona, Inc.
Record Book Committee
35006 N. 27th Lane, Phoenix, AZ 85086
attn: Marvin Zieser, Records Secretary